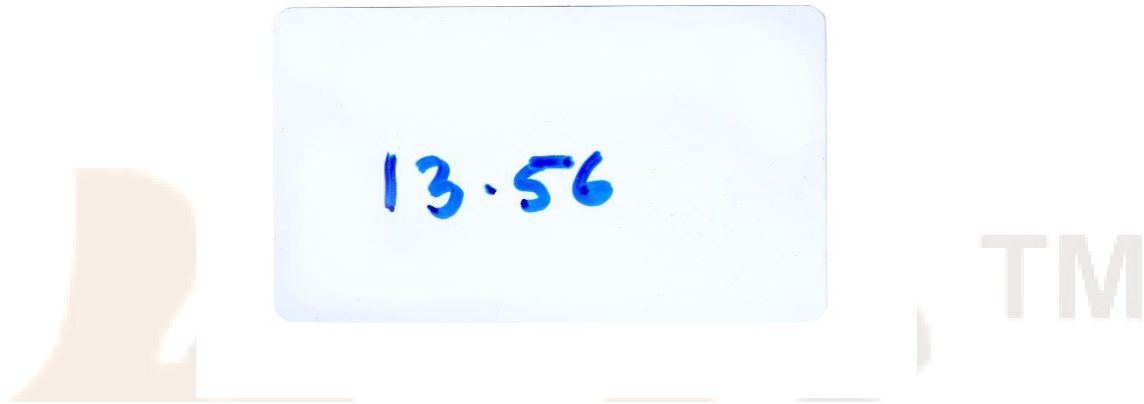


RFID 13.56KHz RF Card / Tag



This **TK4100 card** can be read by almost any RFID/NFC reader or NFC-enabled mobile devices.

This is RFID 13.56MHz Card used for Contactless transmission of data and supplies energy with no battery needed. Its Operating distance is Up to 1 Meter depending on antenna geometry. Operating frequency is 13.56MHz and Data transfer speed is 106 Kbit/s.

It is featured with Data integrity of 16 Bit CRC, parity, bit coding bit counting which allows Anti-collision. These cards are typically used in ticketing transaction: <100 ms including backup management.

Features:

1. Contactless transmission of data and supply energy (no battery needed)
2. Anti-collision
3. **EEPROM**
 - 1Kbit, organized in 16 sectors, each district two passwords
 - User definable access conditions for each memory block
 - Data retention of 10 years.
 - Write endurance 100 000 cycles
4. **Security**
 - Individual key set per sector (per application) to support multi-application with key hierarchy
 - A unique serial number for each device
 - Transport key protects access to EEPROM on-chip delivery

Product Details:

Type	Passive RFID
Material	PVC
Model Name/Number	TK4100
Operating Frequency	13.56 MHz
Default Protocol	ISO14443A
Variable Identification	0 - 5 cm
Operating Distance	Up to 100mm (depending on antenna geometry)
Data Transfer	106 kbit/s
Data Integrity	16 Bit
Typical Tracking Transaction	<100 ms
Data Storage Time	Minimum 10 years
Dimensions	86 x 54 mm
Thickness	0.88 mm
Operating Temperature	-20 to 60

Applications:

1. Public transportation
2. Access control
3. Event Ticketing
4. Gaming & identity